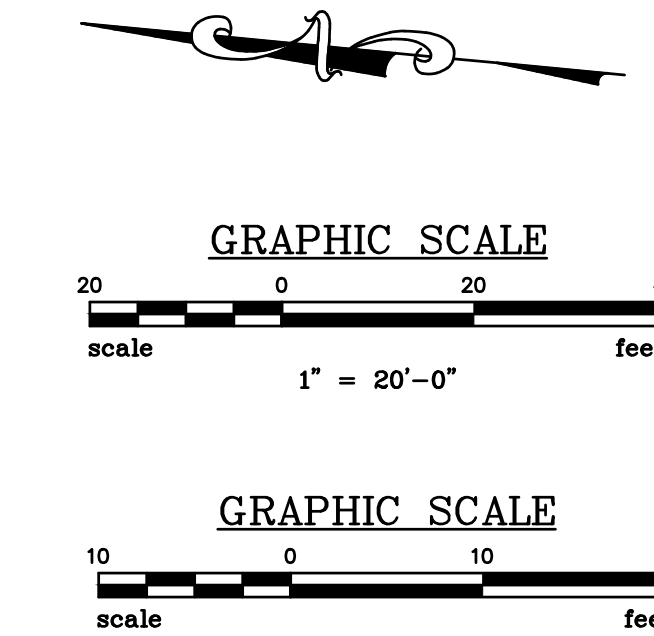
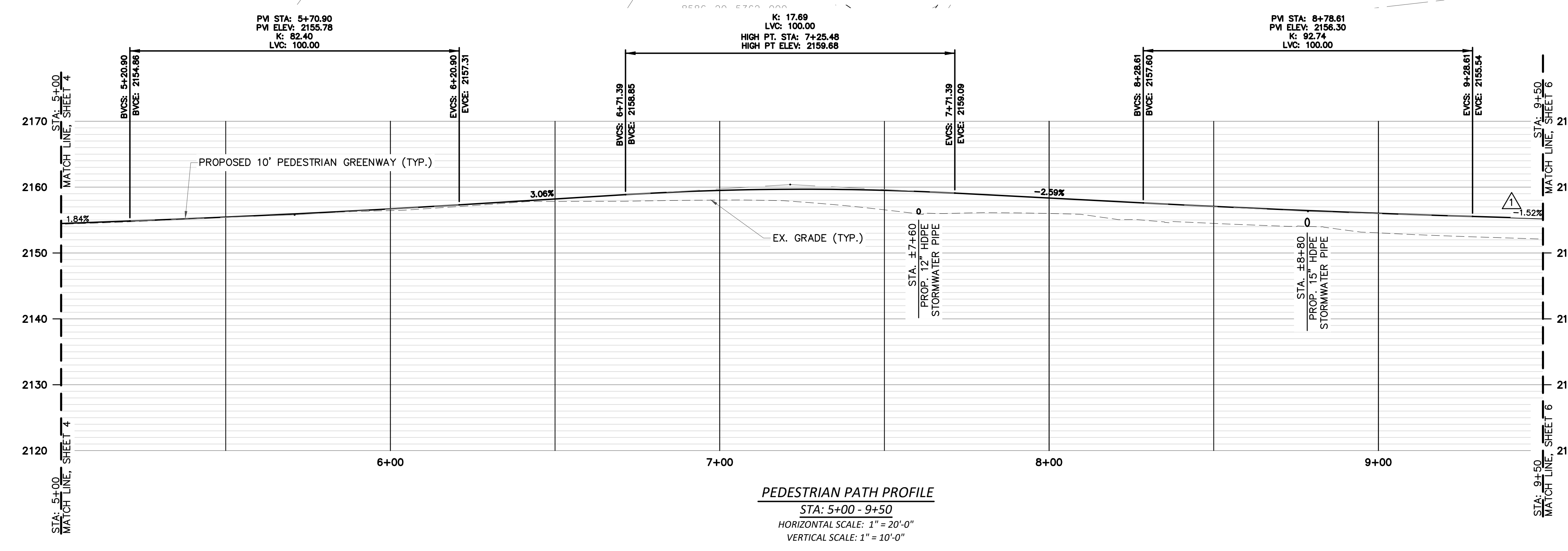
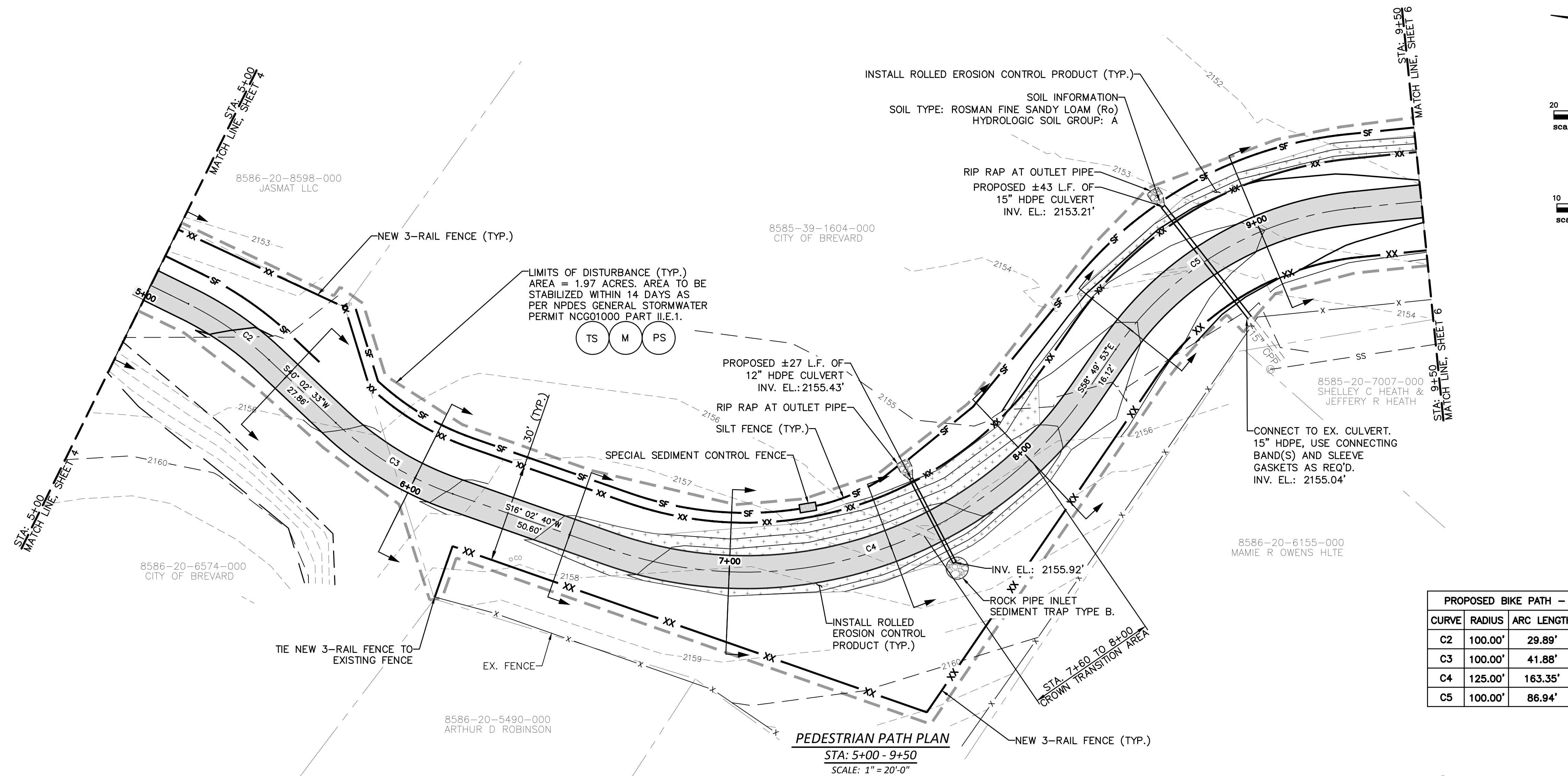


THIS DRAWING IS THE PROPERTY OF SUMMIT ENGINEERING GROUP, INC. AND IS NOT TO BE REPRODUCED OR TRANSMITTED IN ANY FORM OR BY ANY MEANS, ELECTRONIC OR MECHANICAL, INCLUDING PHOTOCOPYING, RECORDING, OR BY ANY INFORMATION STORAGE AND RETRIEVAL SYSTEM, WITHOUT THE WRITTEN PERMISSION OF SUMMIT ENGINEERING GROUP, INC. AND IS NOT TO BE USED ON ANY OTHER PROJECT AND SITE SPECIFICALLY IDENTIFIED HEREIN AND IS NOT TO BE USED ON ANY OTHER PROJECT.

N:\PROJECTS\22017_BREVARD - BIKE PATH\DWG\22017-Base_TANNERY.ncgdot.dwg, 5/28/2026, 9:31:53 AM



REVISIONS

NO.	DESCRIPTION	DATE	BY
1	REVISED BASED ON 1/14/25 MFC		MFC
2	REVISED BASED ON 1/22/26 MFC		MFC
3	REVISED BASED ON 1/22/26 MFC		MFC
4	REVISION REVIEW		

APPROVALS

PROJECT ENG.	DESIGNED BY:	DRAWN BY:	CHECKED BY:	APPROVED:
AF	AF	ADK	MFC	AF

SEAL
9803225
Alvin Fuller, Jr.
VIN FULLER, JR.
5/28/2026

SUMMIT
ENGINEERING GROUP, INC.
ENGINEERS • PLANNERS • SURVEYORS
9601 Warren H. Abernathy Hwy.
Spartanburg, SC 29301
(864)949-1111

SHEET TITLE
PEDESTRIAN WALKWAY
PLAN AND PROFILE
DATE: DEC. 2023 SCALE: AS SHOWN

PROJECT
ESTATOE TRAIL PHASE III
(TANNERY PROPERTY)
FOR THE
CITY OF BREVARD, NC
TRANSYLVANIA COUNTY NORTH CAROLINA

N.B. NO.
REF.
PROJECT NO.
22017

SHEET
5
OF

FILE: 22017_Base